



**HHS**

HEALTHY HEMP STRATEGIES, LLC.

MASTER CATALOG

ZERO THC | MANUFACTURED IN USA | PHARMACEUTICAL GRADE

[www.healthyhempstrategies.com](http://www.healthyhempstrategies.com)



BROAD SPECTRUM ZERO-THC

# BROAD SPECTRUM DISTILLATE



Our Zero-THC Broad Spectrum Distillate has all cannabinoids and terpenes naturally found in hemp except Delta 9-Tetrahydrocannabinol (THC). This non-psychoactive product allows for the global distribution of our Broad Spectrum Distillate into international markets that have a zero tolerance for any levels of THC. The extraction & purification process uses a proprietary and patented technology that preserves all the phytocannabinoids, terpenes, and plant lipids, while eliminating unwanted THC and chlorophyll. Customers can customize our hemp distillate to the desired potency and specifications. A rigorous testing scheme using chromatography and 3rd party testing is followed to ensure that the critical attributes; taste, color, potency, and purity consistently meet customer's requirements for making finished products.

## ACTIVE INGREDIENTS

- Phytocannabinoid-Rich Hemp Oil

## ATTRIBUTES

- Phytocannabinoids up to 95%
- Tetrahydrocannabinol (THC) Not Detected

## MICROBIAL ANALYSIS

- Total Aerobic Count < 2,000 cfu/g
- Total Yeast and Mold < 200 cfu/g
- E. Coli = Negative
- Salmonella = Negative

## PACKAGING

- Bulk
- 24 Month Shelf Life

## APPROVED TERMINOLOGY

- "Non-GMO"
- "GMP Compliant"
- "Manufactured in USA"
- "Organically Grown Hemp"

## CONTAMINANT ANALYSIS

- Heavy Metals: Not Detected (ND)
- Lead: ND
- Arsenic: ND
- Residual Solvents: ND

## BULK PRICE

Based on Volume. Contact your Sales Representative

## QUESTIONS?

Contact your HHS Sales Representative.

Cannabinoids by HPLC			Complete
Analyte	%	mg/g	
CBDV	0.73	7.3	
CBDa	ND	ND	
CBG	0.80	8.0	
CBD	92.09	920.9	
THCV	ND	ND	
CBN	0.90	9.0	
Δ9-THC	ND	ND	
CBC	2.87	28.7	
THCa	ND	ND	
Δ8-THC	ND	ND	
<b>Total</b>	<b>97.40</b>	<b>974.0</b>	

<b>&lt;RL</b> Total THC	<b>92.09%</b> Total CBD	<b>97.40%</b> Total Cannabinoids
<b>0:1</b> THC : CBD Ratio	<b>1:0</b> CBD : THC Ratio	<b>Not Tested</b> <i>NT</i> Moisture

Total THC = THCa \* 0.877 + d9-THC; Total CBD = CBDa \* 0.877 + CBD; RL = Reporting Limit

## CONTACT INFO

140 Mason Circle Suite K  
Concord, CA 94520

www.healthyhempstrategies.com  
info@healthyhempstrategies.com

ZERO THC | MANUFACTURED IN USA | PHARMACEUTICAL GRADE





BROAD SPECTRUM ZERO-THC

## BROAD SPECTRUM TINCTURES

Our Phytocannabinoid-Rich Broad Spectrum Tincture products are created using our Broad Spectrum hemp oil and diluted with hemp seed oil, grape seed oil and or coconut oil (MCT) and can be custom designed with any of our Broad Spectrum Hemp oils. Our Tinctures can contain either zero or < 0.3% THC. These products have various sub-lingual applications. Our Broad Spectrum Tinctures can also be formulated with specific isolated terpenes, terpene blends, as well as our water soluble liquid.



### ACTIVE INGREDIENTS

- Cannabidiol (CBD)
- Zero-THC or available with THC < 0.3%

### INACTIVE INGREDIENTS

Medium Chain Triglycerides from Coconut Oil (MCT) and/or Hemp Seed Oil and/or Grape Seed Oil, Stevia, Organic Orange Oil or Organic Lemon Oil or Organic Peppermint Oil for flavor.

### ATTRIBUTES

- Available in 100 mg, 250 mg, 500 mg, 1000 mg
- Zero-THC or THC < 0.3%
- Broad Spectrum Profile
- GMP Manufactured
- Standard Flavor Options:
  - Peppermint
  - Orange
  - Lemon

### APPROVED TERMINOLOGY

- "Non-GMO"
- "GMP Compliant"
- "Manufactured in USA"
- "Organically Grown Hemp"
- "All Natural"
- "Pharmaceutical Grade"

### CONTAMINANT ANALYSIS

- Heavy Metals: Not Detected (ND)
- Lead: ND
- Arsenic: ND
- Residual Solvents: ND

### MICROBIAL ANALYSIS

- Total Aerobic Count < 2,000 cfu/g
- Total Yeast and Mold < 200 cfu/g
- E. Coli = Negative
- Salmonella = Negative

### DOSAGE

- 1-2 Dropperfuls Daily.

### PACKAGING

- Bulk or Bottled
- 18 Month Shelf Life.

### BULK PRICE

Based on volume. Refer to Price Sheet.

### QUESTIONS?

Contact your HHS Sales Representative.

### CONTACT INFO

140 Mason Circle Suite K  
Concord, CA 94520

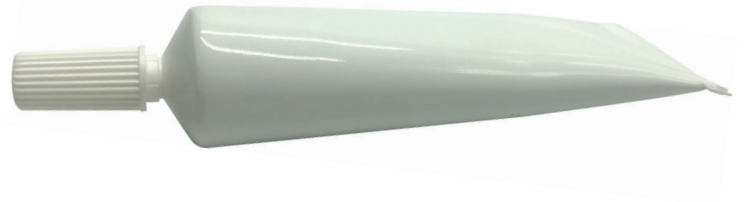
[www.healthyhempstrategies.com](http://www.healthyhempstrategies.com)  
[info@healthyhempstrategies.com](mailto:info@healthyhempstrategies.com)

ZERO THC | MANUFACTURED IN USA | PHARMACEUTICAL GRADE





BROAD SPECTRUM ZERO-THC  
**BALMS & SALVES**



Let us help you with a custom topical formulation unique to your brand or company. Our Phytocannabinoid-Rich Broad Spectrum Hemp Oil Balms, Salves, and Creams are created with beeswax and coconut oil as well as essential oils of your choice. This product can be made with any of our Broad Spectrum oils, terpenes, and phytocannabinoids. Customers can determine their desired potency.

#### ACTIVE INGREDIENTS

- Phytocannabinoid-Rich Hemp Oil

#### INACTIVE INGREDIENTS

Beeswax, MCT oil (Medium Chain Triglycerides), Essential Oils.

#### ATTRIBUTES

- Available in 500mg per 1oz Tube
- Highly Bioavailable
- Custom Formulations Available
- Custom Potency Available

#### MICROBIAL ANALYSIS

- Total Aerobic Count < 2,000 cfu/g
- Total Yeast and Mold < 200 cfu/g
- E. Coli = Negative
- Salmonella = Negative

#### APPROVED TERMINOLOGY

- "Non-GMO"
- "GMP Compliant"
- "Manufactured in USA"
- "Organically Grown Hemp"

#### CONTAMINANT ANALYSIS

- Heavy Metals: Not Detected (ND)
- Lead: ND
- Arsenic: ND
- Residual Solvents: ND

#### PACKAGING

- 1 oz (+ Custom).
- Box also available
- Bulk.
- 18 Month Shelf Life.

#### BULK PRICE

Based on volume. Refer to Price Sheet.

#### QUESTIONS?

Contact your HHS Sales Representative.

#### CONTACT INFO

140 Mason Circle Suite K  
Concord, CA 94520

[www.healthyhempstrategies.com](http://www.healthyhempstrategies.com)  
[info@healthyhempstrategies.com](mailto:info@healthyhempstrategies.com)

**ZERO THC | MANUFACTURED IN USA | PHARMACEUTICAL GRADE**





ZERO-THC

# CBD GUMDROPS



Our 10 mg. CBD Gumdrops are Certified Kosher, Vegan & Gluten Free. They are created with CBD containing 0.00% THC and each peice is INFUSED with 10mg of CBD per gumdrop - not coated, sprayed, or dipped.

Available in 3 Flavors: (Strawberry, Cotton Candy, & Mixed Berry)

## ACTIVE INGREDIENTS

10mg CBD per Gumdrop.

## INACTIVE INGREDIENTS

Organic Tapioca Syrup, Organic Cane Sugar, Water, Pectin, Natural Flavors, Organic Fruit & Vegetable Juice (For Color), Citric Acid, Sodium Citrate, Malic Acid, Organic Sunower Lecithin

## DOSAGE

Daily as needed.

## ATTRIBUTES

- Zero-THC
- Kosher, Vegan, Gluten Free

## MICROBIAL ANALYSIS

- Total Aerobic Count < 2,000 cfu/g
- Total Yeast and Mold < 200 cfu/g
- E. Coli = Negative
- Salmonella = Negative

## APPROVED TERMINOLOGY

- "Manufactured in USA"
- "Organically Grown Hemp"

## CONTAMINANT ANALYSIS

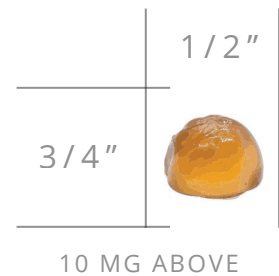
- Heavy Metals: Not Detected (ND)
- Lead: ND
- Arsenic: ND
- Residual Solvents: ND

## PACKAGING

- 60 Count Bottled
- 1,000 Count Bulk Per Flavor
- 18 Month Shelf Life.

## BULK PRICE

Based on volume. Refer to Price Sheet.



## QUESTIONS?

Contact your HHS Sales Representative.

### CONTACT INFO

140 Mason Circle Suite K  
Concord, CA 94520

[www.healthyhempstrategies.com](http://www.healthyhempstrategies.com)  
[info@healthyhempstrategies.com](mailto:info@healthyhempstrategies.com)

ZERO THC | MANUFACTURED IN USA | PHARMACEUTICAL GRADE





BROAD SPECTRUM ZERO-THC  
**10MG CBD SOFTGELS**



Our Phytocannabinoid-Rich (Broad Spectrum) Softgels are created with our patent-pending water-soluble Broad Spectrum hemp oil, along with other minor phytocannabinoids such as CBG, CBN, CBC, and over 40 naturally-present terpenes. This product contains 10 mg of phytocannabinoids per dose and is designed to have maximum absorption and optimum bioavailability. The patent-pending water-soluble formulation inside these softgels is composed of a nanoemulsion based delivery system with cannabinoid emulsion droplets approximately 25 nanometers in size. The high surface area of cannabinoid droplets maximizes in-vivo absorption and the resulting bioavailability is 3-5 times higher than cannabinoids delivered in natural, oil form. The enhanced and consistent absorption (despite fed vs. fasting state) leads to predictable biological response and improved efficacy.

**ACTIVE INGREDIENTS**

- 10 mg Water Soluble Broad Spectrum Hemp Oil

**INACTIVE INGREDIENTS**

Polysorbate Emulsifiers, Medium Chain Triglycerides from Coconut oil, Beta Caryophyllene. Gelatin Shell: Bovine-derived Gelatin, Glycerin, Sorbitol, and Water.

**DOSAGE**

- 1-4 Softgels Daily.

**ATTRIBUTES**

- Zero-THC
- Broad Spectrum Profile
- Pharmaceutical Grade

**UNIQUE CLAIMS**

CBD is in water-soluble nano-emulsion form, increasing bioavailability. Made with Broad Spectrum oil including unique terpenes.

**APPROVED TERMINOLOGY**

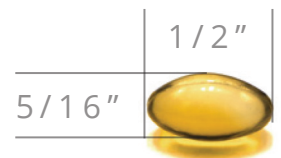
- "Non-GMO"
- "Manufactured in USA"
- "Organically Grown Hemp"
- "Pharmaceutical Grade"

**CONTAMINANT ANALYSIS**

- Heavy Metals: Not Detected (ND)
- Lead: ND
- Arsenic: ND
- Residual Solvents: ND

**MICROBIAL ANALYSIS**

- Total Aerobic Count < 2,000 cfu/g
- Total Yeast and Mold < 200 cfu/g
- E. Coli = Negative
- Salmonella = Negative



WEIGHT: 0.66 GRAMS

**PACKAGING**

- Bulk or Bottled
- 18 Month Shelf Life.

**BULK PRICE**

Based on volume. Refer to Price Sheet.

**QUESTIONS?**

Contact your HHS Sales Representative.

CONTACT INFO

140 Mason Circle Suite K  
 Concord, CA 94520

[www.healthyhempstrategies.com](http://www.healthyhempstrategies.com)  
[info@healthyhempstrategies.com](mailto:info@healthyhempstrategies.com)

ZERO THC | MANUFACTURED IN USA | PHARMACEUTICAL GRADE





BROAD SPECTRUM ZERO-THC

## 25MG CBD SOFTGELS



Our Phytocannabinoid-Rich (Broad Spectrum) Softgels are created with our patent-pending water-soluble Broad Spectrum hemp oil, along with other minor phytocannabinoids such as CBG, CBN, CBC, and over 40 naturally-present terpenes. This product contains 25 mg of phytocannabinoids per dose and is designed to have maximum absorption and optimum bioavailability. The patent-pending water-soluble formulation inside these softgels is composed of a nanoemulsion based delivery system with cannabinoid emulsion droplets approximately 25 nanometers in size. The high surface area of cannabinoid droplets maximizes in-vivo absorption and the resulting bioavailability is 3-5 times higher than cannabinoids delivered in natural, oil form. The enhanced and consistent absorption (despite fed vs. fasting state) leads to predictable biological response and improved efficacy.

### ACTIVE INGREDIENTS

- 25 mg Water Soluble Broad Spectrum Hemp Oil

### INACTIVE INGREDIENTS

Polysorbate Emulsifiers, Medium Chain Triglycerides from Coconut oil, Beta Caryophyllene. Gelatin Shell: Bovine-derived Gelatin, Glycerin, Sorbitol, and Water.

### DOSAGE

- 1-4 Softgels Daily.

### ATTRIBUTES

- Zero-THC
- Broad Spectrum Profile
- Pharmaceutical Grade

### UNIQUE CLAIMS

CBD is in water-soluble nano-emulsion form, increasing bioavailability. Made with Broad Spectrum oil including unique terpenes.

### APPROVED TERMINOLOGY

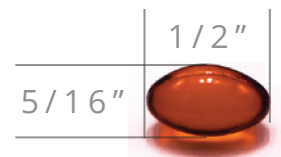
- "Non-GMO"
- "Manufactured in USA"
- "Organically Grown Hemp"
- "Pharmaceutical Grade"

### CONTAMINANT ANALYSIS

- Heavy Metals: Not Detected (ND)
- Lead: ND
- Arsenic: ND
- Residual Solvents: ND

### MICROBIAL ANALYSIS

- Total Aerobic Count < 2,000 cfu/g
- Total Yeast and Mold < 200 cfu/g
- E. Coli = Negative
- Salmonella = Negative



WEIGHT: 0.66 GRAMS

### PACKAGING

- Bulk or Bottled
- 18 Month Shelf Life.

### BULK PRICE

Based on volume. Refer to Price Sheet.

### QUESTIONS?

Contact your HHS Sales Representative.

### CONTACT INFO

140 Mason Circle Suite K  
Concord, CA 94520

[www.healthyhempstrategies.com](http://www.healthyhempstrategies.com)  
[info@healthyhempstrategies.com](mailto:info@healthyhempstrategies.com)

ZERO THC | MANUFACTURED IN USA | PHARMACEUTICAL GRADE





BROAD SPECTRUM ZERO-THC

# 25MG CBD SOFTGELS + CURCUMIN



Our Phytocannabinoid-Rich (Broad Spectrum) Softgels with Curcumin are created with our patent-pending water-soluble Broad Spectrum hemp oil, along with other minor phytocannabinoids such as CBG, CBN, CBC, and over 40 naturally-present terpenes. This product contains 25 mg of phytocannabinoids and 10 mg of curcumin per dose and is designed to have maximum absorption and optimum bioavailability. The patent-pending water-soluble formulation inside these softgels is composed of a nanoemulsion based delivery system with cannabinoid and curcumin emulsion droplets approximately 25 nanometers in size. The high surface area of cannabinoid and curcumin droplets maximizes in-vivo absorption and the resulting bioavailability is 3-5 times higher for CBD, and 100-times higher for curcumin than their natural oily form. The enhanced and consistent absorption (despite fed vs. fasting state) leads to predictable biological response.

## ACTIVE INGREDIENTS

- 25 mg Water Soluble Broad Spectrum Hemp Oil per Softgel
- 10 mg Water Soluble Curcuminoids

## INACTIVE INGREDIENTS

Polysorbate Emulsifiers, Medium Chain Triglycerides from Coconut oil, Beta Caryophyllene. Gelatin Shell: Bovine-derived Gelatin, Glycerin, Sorbitol, and Water.

## DOSAGE

- 1-4 Softgels Daily.

## ATTRIBUTES

- Zero-THC
- Broad Spectrum Profile
- Pharmaceutical Grade

## UNIQUE CLAIMS

CBD is in water-soluble nano-emulsion form, increasing bioavailability. Made with Broad Spectrum oil including unique terpenes.

## APPROVED TERMINOLOGY

- “CBD 4-times more Bioavailable”
- “Curcumin 190-times more Bioavailable”
- “Non-GMO”
- “Manufactured in USA”
- “Organically Grown Hemp”
- “Pharmaceutical Grade”

## CONTAMINANT ANALYSIS

- Heavy Metals: Not Detected (ND)
- Lead: ND
- Arsenic: ND
- Residual Solvents: ND

## MICROBIAL ANALYSIS

- Total Aerobic Count < 2,000 cfu/g
- Total Yeast and Mold < 200 cfu/g
- E. Coli = Negative
- Salmonella = Negative



WEIGHT: 0.66 GRAMS

## PACKAGING

- Bulk or Bottled
- 18 Month Shelf Life.

## BULK PRICE

Based on volume. Refer to Price Sheet.

## STARTER PACK

Available in finished product pack & bulk starter pack.

## QUESTIONS?

Contact your HHS Sales Representative.

## CONTACT INFO

140 Mason Circle Suite K  
Concord, CA 94520

[www.healthyhempstrategies.com](http://www.healthyhempstrategies.com)  
[info@healthyhempstrategies.com](mailto:info@healthyhempstrategies.com)

ZERO THC | MANUFACTURED IN USA | PHARMACEUTICAL GRADE





BROAD SPECTRUM ZERO-THC

# 25MG SOFTGELS W/ MELATONIN



The advanced water-soluble nanoemulsion softgels are designed to address specific conditions like insomnia and sleep disorders and is composed of water-soluble phytocannabinoid-rich hemp oil and melatonin in a microemulsion form. The nano-sized droplets of cannabidiol and melatonin make these botanical actives easy to absorb into the bloodstream. With 25 mg of Broad Spectrum hemp oil and 1 mg of Melatonin per softgel, this formula is truly synergistic, leveraging multiple botanical actives through various pathways help accomplish better quality of sleep.

## ACTIVE INGREDIENTS

- 25 mg Water Soluble Broad Spectrum Hemp Oil
- 1 mg Melatonin

## INACTIVE INGREDIENTS

Polysorbate Emulsifiers, Medium Chain Triglycerides, Beta Caryophyllene, Artificial Coloring which includes blue 1, yellow 5, blue 2, red 40. Gelatin Shell: Bovine-derived Gelatin, Glycerin, Sorbitol, and Water.

## DOSAGE

- 1-4 Softgels Daily.

## ATTRIBUTES

- Zero-THC
- Broad Spectrum Profile
- Pharmaceutical Grade

## UNIQUE CLAIMS

CBD and melatonin are in water-soluble nanoemulsion form, increasing bioavailability. Made with broad spectrum oil.

## APPROVED TERMINOLOGY

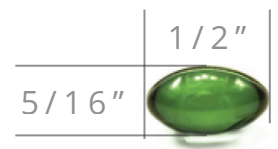
- "Manufactured in USA"
- "Organically Grown Hemp"
- "Pharmaceutical Grade"

## CONTAMINANT ANALYSIS

- Heavy Metals: Not Detected (ND)
- Lead: ND
- Arsenic: ND
- Residual Solvents: ND

## MICROBIAL ANALYSIS

- Total Aerobic Count < 2,000 cfu/g
- Total Yeast and Mold < 200 cfu/g
- E. Coli = Negative
- Salmonella = Negative



WEIGHT: 0.66 GRAMS

## PACKAGING

- Bulk or Bottled
- 18 Month Shelf Life.

## BULK PRICE

Based on volume. Refer to Price Sheet.

## QUESTIONS?

Contact your HHS Sales Representative.

### CONTACT INFO

140 Mason Circle Suite K  
Concord, CA 94520

[www.healthyhempstrategies.com](http://www.healthyhempstrategies.com)  
[info@healthyhempstrategies.com](mailto:info@healthyhempstrategies.com)

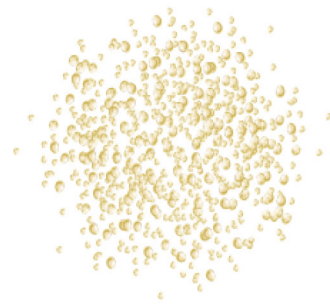
ZERO THC | MANUFACTURED IN USA | PHARMACEUTICAL GRADE





BROAD SPECTRUM ZERO-THC

## WATER SOLUBLE LIQUID



Our patent-pending water-soluble formulations are developed through our nanoemulsion technology platform. This technology transforms active compounds into nano-sized emulsions making them highly bioavailable and more permeable when applied to the skin. This proprietary formulation has been designed for optimum bioavailability and maximum absorption. The product is Broad Spectrum water soluble Broad Spectrum oil with a light herb taste. It is intended for dissolution immediately prior to consumption and for manufacturing of semisolid/solid products, where water solubility leads to a better dispersion of phytocannabinoids in the formula.

### ACTIVE INGREDIENTS

- Liquid 7.5% (75 mg CBD per gram).

### INACTIVE INGREDIENTS

Colloidal Delivery System (medium chain triglycerides, Vitamin E TPGS, polysorbate, naturally present terpenes).

### ATTRIBUTES

- Completely Water Soluble
- Highly Bioavailable
- Water Soluble Powder is 20% Cannabidiol
- Water Soluble Liquid is 7.5% Cannabidiol
- Custom Formulations Available

### MICROBIAL ANALYSIS

- Total Aerobic Count < 2,000 cfu/g
- Total Yeast and Mold < 200 cfu/g
- E. Coli = Negative
- Salmonella = Negative

### APPROVED TERMINOLOGY

- "Non-GMO"
- "GMP Compliant"
- "Manufactured in USA"
- "Organically Grown Hemp"
- "Pharmaceutical Grade"

### CONTAMINANT ANALYSIS

- Heavy Metals: Not Detected (ND)
- Lead: ND
- Arsenic: ND
- Residual Solvents: ND

### PACKAGING

- Bulk or Bottled.
- 2 Year Shelf Life.

### BULK PRICE

Based on volume. Refer to Price Sheet.

### QUESTIONS?

Contact your HHS Sales Representative.

#### CONTACT INFO

140 Mason Circle Suite K  
Concord, CA 94520

[www.healthyhempstrategies.com](http://www.healthyhempstrategies.com)  
[info@healthyhempstrategies.com](mailto:info@healthyhempstrategies.com)

ZERO THC | MANUFACTURED IN USA | PHARMACEUTICAL GRADE





BROAD SPECTRUM ZERO-THC

# WATER SOLUBLE POWDER



Our patent-pending water-soluble formulations are developed through our nanoemulsion technology platform. Our standard water soluble Broad Spectrum powder is a phytocannabinoid-rich (Broad Spectrum) powder with 20% CBD, other minor phytocannabinoids, and terpenes. This proprietary formulation has been designed for optimum bioavailability and maximum absorption. The product is Broad Spectrum water-soluble Broad Spectrum powder with a light herb taste. It is intended for dissolution immediately prior to consumption and for manufacturing of semisolid/solid products, where watersolubility leads to a better dispersion of phytocannabinoids in the formula.

## ACTIVE INGREDIENTS

- Powder 20% (200 mg CBD per gram).

## INACTIVE INGREDIENTS

Dextrin, Acacia Gum, Phytocannabinoid Rich Hemp Oil, Sunflower Lecithin, Vitamin E, Polysorbate.

## ATTRIBUTES

- Completely Water Soluble
- Highly Bioavailable
- Water Soluble Powder is 20% Cannabidiol
- Custom Formulations Available
- Manufacturing Ready

## MICROBIAL ANALYSIS

- Total Aerobic Count < 2,000 cfu/g
- Total Yeast and Mold < 200 cfu/g
- E. Coli = Negative
- Salmonella = Negative

## APPROVED TERMINOLOGY

- "Non-GMO"
- "GMP Compliant"
- "Manufactured in USA"
- "Organically Grown Hemp"
- "All Natural"

## CONTAMINANT ANALYSIS

- Heavy Metals: Not Detected (ND)
- Lead: ND
- Arsenic: ND
- Residual Solvents: ND

## PACKAGING

- Bulk or Bottled.
- 18 Month Shelf Life.

## BULK PRICE

Based on volume. Refer to Price Sheet.

## QUESTIONS?

Contact your HHS Sales Representative.

## CONTACT INFO

140 Mason Circle Suite K  
Concord, CA 94520

[www.healthyhempstrategies.com](http://www.healthyhempstrategies.com)  
[info@healthyhempstrategies.com](mailto:info@healthyhempstrategies.com)

ZERO THC | MANUFACTURED IN USA | PHARMACEUTICAL GRADE





BROAD SPECTRUM ZERO-THC

# PROTEIN HEMP POWDER



Our High Protein Hemp Powder is a dried, post extracted hemp plant (“hemp meal”) material with 0.3% to 0.5% phytocannabinoids. This material has been dried, milled, blended, sieved, and sterilized to ensure its consistency, potency, and safety. It can be used as a source of protein and phytocannabinoids to enhance animal feed and edible products for humans.

## ACTIVE INGREDIENTS

- Cannabidiol (CBD) 0.3% - 0.5%

## INACTIVE INGREDIENTS

- 20% Protein
- 50% Fiber
- 30% Carbohydrates
- 0.3% Phytocannabinoids

## MICROBIAL ANALYSIS

- Total Aerobic Count < 2,000 cfu/g
- Total Yeast and Mold < 200 cfu/g
- E. Coli = Negative
- Salmonella = Negative
- Aflatoxins = Negative

## CONTAMINANT ANALYSIS

- Heavy Metals: Not Detected (ND)
- Lead: ND
- Arsenic: ND
- Residual Solvents: ND

## APPROVED TERMINOLOGY

- “Non-GMO”
- “GMP Compliant”
- “Manufactured in USA”
- “Organically Grown Hemp”

## PACKAGING

- Bulk.
- 18 Month Shelf Life.

## BULK PRICE

Based on volume. Refer to Price Sheet.

## QUESTIONS?

Contact your HHS Sales Representative.

### CONTACT INFO

140 Mason Circle Suite K  
Concord, CA 94520

[www.healthyhempstrategies.com](http://www.healthyhempstrategies.com)  
[info@healthyhempstrategies.com](mailto:info@healthyhempstrategies.com)

ZERO THC | MANUFACTURED IN USA | PHARMACEUTICAL GRADE





BROAD SPECTRUM ZERO-THC  
**K9 SOFT DOG CHEWS**



Our veterinarian formulated canine soft chews provide a Broad Spectrum profile of synergistic compounds that are naturally present in our zero-THC phytocannabinoid rich organically grown hemp oil. Each soft chew is chicken flavored and easy to digest. They can be used as a treat, supplement, or addition to any dog’s diet. Specially formulated to help canines with any pain, inflammation, stress, anxiety, age related issues, and overall health & wellness.

**ACTIVE INGREDIENTS**

- 2 mg CBD per chew.

**DOSAGE**

0.25 mg/kg 1-2 Times Daily  
 (1 mg for every 8.8 lbs)

WEIGHT: 4.5 GRAMS

1 / 2"

5 / 8"



**INACTIVE INGREDIENTS**

Soft Chew: Water, dried brewer’s yeast, glycerin. Gum Arabic, sodium alginate, chicken, natural bacon flavor, flaxseed oil, microcrystalline cellulose, organic sweet potato powder, sunflower lecithin (non-GMO), citrus pectin, vitamin E, sodium propionate, calcium sulfate dehydrate, dextrin, an antioxidant gum Acacia, polysorbate, sunflower lecithin, citric acid, natural mixed tocopherols (natural preservative).

**ATTRIBUTES**

- Broad Spectrum Profile:
- Cannabidiol (CBD)
- Cannabigerol (CBG)
- Cannabinol (CBN)
- Naturally Present Terpenes
- Zero THC

**APPROVED TERMINOLOGY**

- “Non-GMO”
- “GMP Compliant”
- “Manufactured in USA”
- “Organically Grown Hemp”
- “Veterinarian Formulated”
- “All Natural”

**PACKAGING**

- 10 lb sealed foil bags w/ ~1000 soft chews in bulk.
- Two 10 lb bags (20 lbs) per shipping carton.
- 18 Month Shelf Life.
- Can be packaged in bottles or pouches, no dessicants needed.

**MICROBIAL ANALYSIS**

- Total Aerobic Count < 2,000 cfu/g
- Total Yeast and Mold < 200 cfu/g
- E. Coli = Negative
- Salmonella = Negative

**CONTAMINANT ANALYSIS**

- Heavy Metals: Not Detected (ND)
- Lead: ND
- Arsenic: ND
- Residual Solvents: ND

**BULK PRICE**

Based on volume. Refer to Price Sheet.

CONTACT INFO

140 Mason Circle Suite K  
 Concord, CA 94520

www.healthyhempstrategies.com  
 info@healthyhempstrategies.com

ZERO THC | MANUFACTURED IN USA | PHARMACEUTICAL GRADE





BROAD SPECTRUM ZERO-THC

# HEMP PELLETS



## FOR EQUINE, LARGE & SMALL RUMINANTS, AVIAN & POCKET PETS

Hemp Pellets are pressed from our Hemp Meal, which contains ZERO THC and a guaranteed minimum cannabinoid content of 0.3% dry matter. They have been assayed to contain ~ 20% plant protein, 30% insoluble fiber and 50% complex carbohydrates. The Hemp Meal that these pellets are pressed from have been sterilized and ground to a uniform mesh. A food-grade FDA-approved mold inhibitor has been added to the pellets when pressed. They are available in 25 pound moisture-barrier resealable bags, 2 X 25 pound bags to the shipping carton. Dosage studies in the horse have found that horses are very sensitive to hemp oil, and generally need a very low dosage relative to their weights. Dosage is dependent on severity of the horses condition, and to some extent, its size. These pellets can be easily administered to a variety of species, including horses, donkeys, mules, goats, sheep, swine, poultry and pet caged birds, rabbits and pocket pets. These pellets are guaranteed to contain a minimum of 0.3% phytocannabinoids, or 3 mg for each gram of pellets. Volume measurement approximates the concentration to be 3 mg for each level teaspoon which would be no less than 9-10 mg per teaspoon. This makes each level Tablespoon to contain 25-30 mg of Broad Spectrum, which would be a single dose for a horse.

### ACTIVE INGREDIENTS

- ≥ 0.3% Phytocannabinoids

### INACTIVE INGREDIENTS

Mycro Curb, Apple Ade

### ATTRIBUTES

- THC Undetectable

### MICROBIAL ANALYSIS

- Total Aerobic Count < 2,000 cfu/g
- Total Yeast and Mold < 200 cfu/g
- E. Coli = Negative
- Salmonella = Negative

### APPROVED TERMINOLOGY

- "Non-GMO"
- "Manufactured in USA"
- "Organically Grown Hemp"

### CONTAMINANT ANALYSIS

- Heavy Metals: Not Detected (ND)
- Lead: ND
- Arsenic: ND
- Residual Solvents: ND

### POTENCY MEASUREMENT

- 1 level Teaspoon = 9-10 mg Broad Spectrum.
- 1 level Tablespoon = 25-30 mg Broad Spectrum.

### PACKAGING

- 25 Pound Sacks
- 18 Month Shelf Life.

### BULK PRICE

Based on volume. Refer to Price Sheet.

### QUESTIONS?

Contact your HHS Sales Representative.

## CONTACT INFO

140 Mason Circle Suite K  
Concord, CA 94520

[www.healthyhempstrategies.com](http://www.healthyhempstrategies.com)  
[info@healthyhempstrategies.com](mailto:info@healthyhempstrategies.com)

ZERO THC | MANUFACTURED IN USA | PHARMACEUTICAL GRADE





BROAD SPECTRUM ZERO-THC

## ISOLATE



Our Pure CBD Isolate is a crystallized powder with cannabidiol concentrations of over 99%. Never synthetic, and never fortified, our naturally high CBD oil starts at 70% CBD and is then gently refined to remove the remaining 30% of plant material all the way down to a single molecule of pure CBD crystalline isolate. Once in the crystallized form, we then crush the CBD crystals into a pure CBD powder so that it may be used effectively and evenly distributed within product formulations.

### ACTIVE INGREDIENTS

- Cannabidiol Isolate.

### ATTRIBUTES

- 99% or Higher Purity
- Zero-THC
- Oil Soluble
- No Residual Solvents
- No Heavy Metals
- No Taste
- No Flavor
- True Single Molecule

### MICROBIAL ANALYSIS

- Total Aerobic Count < 2,000 cfu/g
- Total Yeast and Mold < 200 cfu/g
- E. Coli = Negative
- Salmonella = Negative

### APPROVED TERMINOLOGY

- "Non-GMO"
- "GMP Compliant"
- "Manufactured in USA"
- "Organically Grown Hemp"

### CONTAMINANT ANALYSIS

- Heavy Metals: Not Detected (ND)
- Lead: ND
- Arsenic: ND
- Residual Solvents: ND

### PACKAGING

- Bulk
- 18 Month Shelf Life.

### BULK PRICE

Based on volume. Refer to Price Sheet.

### QUESTIONS?

Contact your HHS Sales Representative.

#### CONTACT INFO

140 Mason Circle Suite K  
Concord, CA 94520

[www.healthyhempstrategies.com](http://www.healthyhempstrategies.com)  
[info@healthyhempstrategies.com](mailto:info@healthyhempstrategies.com)

ZERO THC | MANUFACTURED IN USA | PHARMACEUTICAL GRADE





BROAD SPECTRUM ZERO-THC

# CBD SPORTS CREAM

Our NEW Sports Cream Is Made From the Highest Quality Broad Spectrum Hemp Extract. Our Lotion Is Made From the Finest Ingredients From All Over the World Including Menthol Eucalyptus to Aid with Pain Relief and Overall Efficacy!

Our Custom Pump Bottle Makes Dosing Precise With Exactly 5mg. CBD in Each Pump.



## ACTIVE INGREDIENTS

- Phytocannabinoid Rich - Broad Spectrum Hemp Oil.

## INACTIVE INGREDIENTS

- Aqua, Butyrospermum Parkii (Shea) Butter, Cetearyl Alcohol (and) Cetearyl Glucoside, Menthol, Tapioca Starch, Organic Aloe Barbadensis (Alo Vera) Leaf Juice, Caprylic Capric Triglyceride, Helianthus Annuus, (Sunflower) Seed Oil, Organic Spinosa (Argan) Kernel Oil, Organic Cocos Nucifera (Coconut) Oil, Broad Spectrum Hemp Extract, Glycerin, Citric Acid, Organic Rosmarinus Officinalis (Rosemary) Leaf Extract, Xanthan Gum, Glyceryl Caprylate, Caprylhydroxamic Acid

## ATTRIBUTES

- Highly Bioavailable
- All Natural
- 5 mg. CBD Per Pump

## APPROVED TERMINOLOGY

- "Non-GMO"
- "GMP Compliant"
- "Manufactured in USA"
- "Organically Grown Hemp"

## CONTAMINANT ANALYSIS

- Heavy Metals: Not Detected (ND)
- Lead: ND
- Arsenic: ND
- Residual Solvents: ND

## PACKAGING

- 3.4 fl. oz (100 ml)
- 18 Month Shelf Life.

## BULK PRICE

Based on volume - Ask Your Representative For Pricing

## QUESTIONS?

Contact your HHS Sales Representative.

### INSTRUCTIONS FOR USE

Adults and children 12 years of age or older: rub onto affected area 3 to 4 times daily. For children under 12 years of age ask a doctor.

### INGREDIENTS

Aqua, Butyrospermum Parkii (Shea) Butter, Cetearyl Alcohol (and) Cetearyl Glucoside, Menthol, Tapioca Starch Modified, Organic Aloe Barbadensis (Aloe Vera) Leaf Juice, Caprylic Capric Triglyceride, Helianthus Annuus (Sunflower) Seed Oil, Organic Argania Spinosa (Argan) Kernel Oil, Organic Cocos Nucifera (Coconut) Oil, Broad Spectrum Hemp Extract, Glycerin, Citric Acid, Organic Rosmarinus Officinalis (Rosemary) Leaf Extract, Xanthan Gum, Glyceryl Caprylate, Caprylhydroxamic Acid

### Keep out of reach of children.

If swallowed, get medical help or contact a Poison Control Center

## CONTACT INFO

140 Mason Circle Suite K  
Concord, CA 94520

[www.healthyhempstrategies.com](http://www.healthyhempstrategies.com)  
[info@healthyhempstrategies.com](mailto:info@healthyhempstrategies.com)

ZERO THC | MANUFACTURED IN USA | PHARMACEUTICAL GRADE





## BROAD SPECTRUM ZERO-THC VAPE & E-LIQUIDS



60ML



30ML



10ML

Our Phytocannabinoid-Rich (Broad Spectrum) Hemp Oil Vape products are created with VG or MCT oil, and have been designed to have accurate dosing delivery with our zero-THC oil. Our extraction process uses the entire plant for a Broad Spectrum oil, containing all phytocannabinoids and terpenes naturally found in hemp. We can custom blend your vape oil with MCT oil, VG, or PG.

### ACTIVE INGREDIENTS

- Phytocannabinoid-Rich Hemp Oil (0.1 - 50%)

### ATTRIBUTES

- Custom Terpene Blends
- Broad Spectrum Profile
- GMP Compliant
- Custom Products Available
- Vapes with Different Flavors Available

### MICROBIAL ANALYSIS

- Total Aerobic Count < 2,000 cfu/g
- Total Yeast and Mold < 200 cfu/g
- E. Coli = Negative
- Salmonella = Negative

### APPROVED TERMINOLOGY

- "Non-GMO"
- "GMP Compliant"
- "Manufactured in USA"
- "Organically Grown Hemp"

### CONTAMINANT ANALYSIS

- Heavy Metals: Not Detected (ND)
- Lead: ND
- Arsenic: ND
- Residual Solvents: ND

### BULK PRICE

Based on volume. Refer to Price Sheet.

### PACKAGING

- Bulk or Bottled.
- 18 Month Shelf Life.

### QUESTIONS?

Contact your HHS Sales Representative.

#### CONTACT INFO

140 Mason Circle Suite K  
Concord, CA 94520

[www.healthyhempstrategies.com](http://www.healthyhempstrategies.com)  
[info@healthyhempstrategies.com](mailto:info@healthyhempstrategies.com)

ZERO THC | MANUFACTURED IN USA | PHARMACEUTICAL GRADE





BROAD SPECTRUM ZERO-THC  
**CELLULOSE FACE MASK**



**STEP 1**

Cleanse and dry face. For best results, apply toner.



**STEP 2**

Unfold 2-piece mask and apply to face. Wait 30 minutes.



**STEP 3**

Remove and massage remaining serum into face and neck.

A super-charged sheet mask infused with 0.0% THC hemp oil elements and various plant extracts to promote healthy hydrated skin. Our proprietary mask wraps the skin, creating a reservoir of ingredients for continuous absorption and better retention.

**Cellulose Fiber Mask Material Benefits:**

**Eco Friendly:** Made from the natural cellulose fiber found in wood pulp. The fiber is economical in its use of energy and natural resources, and is fully biodegradable

**Moisture Absorbent:** This eco fabric has natural breathability and 50% greater moisture absorption than cotton

**Anti-Bacterial:** Due to its moisture management, our cellulose mask is also anti-bacterial

**Feel of fabric:** Soft, breathable, lightweight and comfortable. Our cellulose mask has an extremely smooth, soft surface that drapes beautifully.

**Great for sensitive skin:** Our cellulose mask's smooth fiber surface feels soft and supple against the skin and its incredible wicking abilities keep the skin hydrated making our cellulose mask a great fabric for sensitive skin.

**ACTIVE INGREDIENTS**

- 10 mg Phytocannabinoid-Rich, Nano-Emulsified Hemp Oil per Mask

**INACTIVE INGREDIENTS**

- Water, Glycerin, Dipropylene Glycol, 1,2-Hexanediol, Carbomer, Triethanolamine, Sodium Benzoate, Chlorphenesin, Sodium Hyaluronate, PEG-60 Hydrogenated Castor Oil, Disodium EDTA, Butylene Glycol, Centella Asiatica Extract, Polygonum Cuspidatum Extract, Scutellaria Baicalensis Root Extract, Camellia Sinensis Leaf Extract, Quillaja Saponaria Bark Extract, Glycyrrhiza Uralensis (Licorice) Root Extract, Anthemis Nobilis Flower Extract, Rosmarinus Officinalis (Rosemary) Flower Extract, Fragrance

**ATTRIBUTES**

- 0.0% THC
- Broad Spectrum Profile

**PHYTOCANNABINOID-RICH HEMP OIL**

- Phytocannabinoid-Rich Hemp Oil and terpenes for restoring balance.
- Antioxidant.
- Omega 3 & Omega 6 Fatty Acids: keep the skin hydrated and helps with skin growth

**POLYGONUM CUSPIDATUM EXTRACT**

Has shown promise for promoting skin health and researchers say the antioxidant properties may help protect skin from photo-aging and oxidative stress.

**GLYCYRRHIZA URALENSIS ROOT EXTRACT (BLACK LICORICE)**

Significantly improves skin elasticity. Hydrates and soothes skin which in turn smooths fine lines and wrinkles.

**ROSMARINUS OFFICINALIS (ROSEMARY) EXTRACT**

- Helps protect skin cells from damage often caused by the sun and free radicals. Since rosemary has natural antiseptic properties, it's a superior disinfectant for our skin. Helps stimulate cell renewal, promoting healthy healing, all while infusing the skin with moisture and improving skin circulation.

**ANTHEMIS NOBILIS FLOWER EXTRACT**

Used to relieve inflammatory skin conditions and calm sensitive skin. Provides some antioxidant protection and can be used to soothe, moisturize and inhibit the growth of bacteria.

**QUESTIONS?**

Contact your HHS Sales Representative.

CONTACT INFO

140 Mason Circle Suite K  
Concord, CA 94520

www.healthyhempstrategies.com  
info@healthyhempstrategies.com





BROAD SPECTRUM ZERO-THC

# J-POD MODS & CARTRIDGES



Our J-Pods and Mods are manufactured using patented, non-infring technology. The J-Pod kit is a cross-compatible pod vaping mod with a sleek, slim, and lightweight design that provides a comfortable, non-obtrusive and effective vaping experience. The HHS-J Mod has a long-lasting and powerful; 3.7v. 350mAh capacity battery designed for use with our patented 0.08 ml. ceramic pods. HHS J-Pods & Mods are also compatible to use with JUUL Pods and devices but they were designed for thicker oils.

This kit comes with a JC01 Ceramic Pod cartridge tank designed with a ceramic cCell coil for longer lifespans and better flavor. Both JC01 Pods hold 0.7ml liquid and are compatible with JUUL batteries and work with any vape juice including thick oils.

## COMPATABLE WITH

- HHS J-PODS
- JUUL PODS
- Micro USB Charger

## SPECIFICATIONS

- Battery: 3.7 volt/ 350 mAh
- Ceramic Pods = (0.08 ml.) capacity / 1.4 ohm resistance

## ATTRIBUTES

- JUUL Pod & Mod Compatible
- Lightweight All-in-One design
- 0.8 ml liquid capacity
- Sleek and portable shape
- LED battery status indicator
- LED light power indicator

## SPECS

### HHS J - Battery

- Size: 65x8x40mm
- Battery Capacity: 350mAh

### HHS-J - Ceramic Tank:

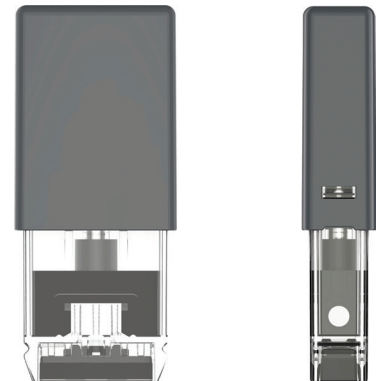
- Capacity: 0.8ml
- Resistance: 1.4ohm
- Coil type: Ceramic coil

## BULK PRICING

Volume Based: Please Refer to Price Sheet or ask your Sales Rep for details

## PACKAGING

- Bulk or Bottled.
- 18 Month Shelf Life.



Ceramic Pod cartridge tank designed with a ceramic c-Cell coil for longer lifespans and better flavor. Pods hold 0.8ml liquid and are compatible with JUUL batteries and work with any vape juice including thick oils & CBD Distillate.

100 mg. CBD Pods Available in Watermelon & Gummy Flavors\*

\* Ingredients: (propylene glycol, vegetable glycerine, hemp-derived cannabidol, natural & artificial flavors)

## CONTACT INFO

140 Mason Circle Suite K  
Concord, CA 94520

[www.healthyhempstrategies.com](http://www.healthyhempstrategies.com)  
[info@healthyhempstrategies.com](mailto:info@healthyhempstrategies.com)

ZERO THC | MANUFACTURED IN USA | PHARMACEUTICAL GRADE





BROAD SPECTRUM ZERO-THC

# WINTERIZED CRUDE CBD



In addition to our finished and manufactured products, Healthy Hemp Strategies also offers Full-Spectrum Crude Hemp Extract, also known as Winterized Crude. Our winterized crude oil is exclusively for our wholesale customers – this product is not available to our retail customers. (Federal EIN or Reseller license number required)

Our hemp is organically grown in Colorado, and our production team uses state-of-the-art CO2 extraction technology to ensure we provide the highest quality CBD Hemp oil. Our extraction process is different than our competitors because it includes the process of winterization. Winterization is an organic process used to remove any excess waxes, fats, and chlorophyll that may still exist after the initial CO2 extraction of the Full Spectrum Hemp Extract Oil.

## ACTIVE INGREDIENTS

- Full spectrum Hemp Extract ≥ 60% CBD

## APPROVED TERMINOLOGY

- “Non-GMO”
- “GMP Compliant”
- “Manufactured in USA”
- “Pesticide and Heavy Metals Free”

## QUESTIONS?

Contact your HHS Sales Representative.

## ATTRIBUTES

- Extracted from organic Colorado Hemp
- Purer, cleaner, less taste
- High CBD content, legal THC content
- Does not solidify at room temperature
- Potency, viscosity, extended shelf-life, and ease of mixing are better with winterization

## ATTRIBUTES

- Winterized CBD Hemp Oil offers an increased potency and cannabinoid content. One benefit of winterization of our CBD Oil is increased viscosity which allows for a superior quality oil because it does not solidify at room temperature. Another benefit of winterized CBD Oil is increased shelf-life. This way we can ensure freshness from our lab to your customer!
- CBD Content – 50% - 75%
- Third-party Lab report provided for every product we sell

### CONTACT INFO

140 Mason Circle Suite K  
Concord, CA 94520

[www.healthyhempstrategies.com](http://www.healthyhempstrategies.com)  
[info@healthyhempstrategies.com](mailto:info@healthyhempstrategies.com)

**ZERO THC | MANUFACTURED IN USA | PHARMACEUTICAL GRADE**





BROAD SPECTRUM ZERO-THC

## HIGH-CBD, LOW-THC: HEMP SEEDS



Not every seed will produce high-CBD, low-THC plants. You will need specialty seeds if you intend to effectively grow CBD-rich hemp plants. We specialize in high-CBD Hemp Seeds, the kind used for creating CBD products.

CBD is typically the second-most abundant cannabinoid in cannabis, but this isn't always the case. A strain may deliver CBD and THC in the following ratios:

- High THC, low CBD (e.g., 10-30% THC, trace amounts of CBD)
- Balanced CBD/THC (e.g., 5-15% THC and CBD)
- High CBD, low THC (e.g., 5-20% CBD, THC under 5%)

High-CBD strains tend to deliver very clear-headed, functional effects without the euphoric high associated with high-THC strains. High-CBD strains also require much less remediation during the manufacturing and distillation process. High-CBD strains are preferred by retailers distributing CBD nationally, and also by consumers who are extremely sensitive to the side effects of THC (e.g., anxiety, paranoia, dizziness). A high-CBD strain would also be a great choice for someone needing to medicate throughout the day to control pain, inflammation, anxiety, or other chronic conditions.

### ACTIVE INGREDIENTS

- High CBD
- Low THC
- Hemp Seeds

### APPROVED TERMINOLOGY

- "Non-GMO"
- "GMP Compliant"
- "Manufactured in USA"
- "Free of Pesticides and Heavy Metals"

### BULK PRICE

- Based on strain and availability

### QUESTIONS?

Contact your HHS Sales Representative.

#### CONTACT INFO

140 Mason Circle Suite K  
Concord, CA 94520

[www.healthyhempstrategies.com](http://www.healthyhempstrategies.com)  
[info@healthyhempstrategies.com](mailto:info@healthyhempstrategies.com)

ZERO THC | MANUFACTURED IN USA | PHARMACEUTICAL GRADE





BROAD SPECTRUM ZERO-THC

## HIGH-CBD, LOW-THC: HEMP BIOMASS



Healthy Hemp Strategies specializes in CBD rich hemp biomass, the kind used for creating CBD products. We work directly with our Farm, and have connections to large scale cultivators and processors to source and distribute; High-CBD, Low-THC hemp biomass internationally. We only use and source high tier industrial hemp:

- Department Of Agriculture Certified
- Organic Farming Practices
- Choose your own cannabinoid Profile
- Choose which state it comes from
- Choose your delivery date

If you require large quantities of biomass, or an experienced farmer, cooperative, nation or investment group seeking to enter the high CBD hemp production space please contact us to discuss potential orders.

### ACTIVE INGREDIENTS

- High CBD
- Low THC
- Organic Hemp

### APPROVED TERMINOLOGY

- "Non GMO"
- "GMP Compliant"
- "Grown in the USA"
- "Pesticide Free"
- "Free of any metals"
- "Organic Grown Hemp"
- "Proof of Origin"

### QUESTIONS?

Contact your HHS Sales Representative.

### CONTACT INFO

140 Mason Circle Suite K  
Concord, CA 94520

[www.healthyhempstrategies.com](http://www.healthyhempstrategies.com)  
[info@healthyhempstrategies.com](mailto:info@healthyhempstrategies.com)

ZERO THC | MANUFACTURED IN USA | PHARMACEUTICAL GRADE

